

\$489,900 - 92 Birch Bay Drive, Rural Lacombe County

MLS® #A2208925

\$489,900

5 Bedroom, 3.00 Bathroom, 1,570 sqft
Residential on 0.47 Acres

Birch Bay, Rural Lacombe County, Alberta

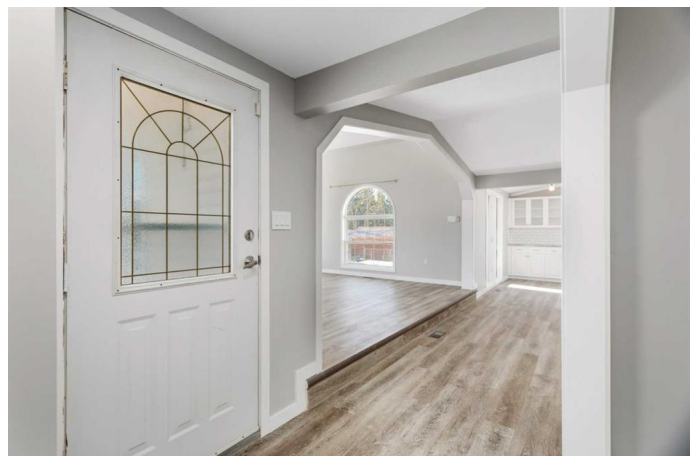
Birch Bay; a Wonderful Lake community with
SO MUCH TO OFFER!

This 1/2 acre property boasts a wonderful
1570 square feet of living space, a gorgeous
and private yard, a double garage with 8'
doors, a small BUNKHOUSE and a 24x30
shop steps from Gull Lake!

Situated with privacy in mind, the home is
open and inviting with a wonderful view of the
treed yard, backing onto a community reserve!
Sheltered by a row of spruce trees, the
backyard faces south for sunny days spent on
one of the two large decks.

The open concept home has wonderful natural
light with plenty of south facing windows.

Stepping in, youâ€™re greeted with a large
raised living room with vaulted ceilings and
floor to ceiling windows anchored by a
fireplace. The HUGE dining/ living space offers
room for family gatherings and entertaining.
The large open concept kitchen offers loads of
cupboards & counter space. There is also a
good sized pantry. Adjacent to the kitchen is a
handy laundry room. At the end of the house is
a private master bedroom and lovely 4 piece
ensuite. On the opposite end of the home,
there is another 4 piece bath and a good sized
bedroom. Heading down to the renovated
basement, youâ€™ll step into the MASSIVE
family room with bright windows and new
plush carpeting. There are 3 more good sized
bedrooms and a 3 piece bath. There is
convenient access to the yard with a walk up
side door. The home has been recently



refreshed with new paint, flooring, baseboards, trim, light fixtures, backsplash, carpet, all new PEX plumbing lines, doors, toilets, basement ceiling tiles, pot lights, light switches & covers and taps. There is also a HUGE amount of closet & storage space. There is a new Furnace and 3 brand new hot water tanks; One for domestic, one for in floor heat (house), and in floor heat for the BUNKHOUSE. The basement is sound and waterproof with a BASEMENT SOLUTIONS waterproofing system. With a lifetime warranty that's transferable, you have piece of mind. Directly off the kitchen through french doors is a massive double deck. Great for sunning, entertaining or relaxing (Lower back deck requires some repair). The piece de resistance is the Bunkhouse! The 24x24 Garage is fully finished and heated with two 8' doors. There is a fantastic little Bunkhouse with a 3 piece bathroom! There is also a 30x24 HEATED SHOP with 220V power, running water, a single garage door and a huge amount of work and project space. The siding and shingles were replaced in 2016. Located on a corner lot, you're also in the Bentley School division with bus stop pick up IN FRONT of the house. The lake is steps away with a beautiful sandy (imported sand!!) beach and a public boat launch. Space, tranquility and privacy START HERE!

Built in 1996

Essential Information

MLS® #	A2208925
Price	\$489,900
Bedrooms	5
Bathrooms	3.00
Full Baths	3
Square Footage	1,570
Acres	0.47

Year Built	1996
Type	Residential
Sub-Type	Detached
Style	Modular Home
Status	Active

Community Information

Address	92 Birch Bay Drive
Subdivision	Birch Bay
City	Rural Lacombe County
County	Lacombe County
Province	Alberta
Postal Code	T0C0J0

Amenities

Parking Spaces	3
Parking	Double Garage Detached
# of Garages	3

Interior

Interior Features	Ceiling Fan(s), French Door, High Ceilings, Separate Entrance, Vaulted Ceiling(s)
Appliances	Gas Stove, Microwave, Refrigerator, Washer/Dryer
Heating	Forced Air
Cooling	None
Fireplace	Yes
# of Fireplaces	1
Fireplaces	Wood Burning
Has Basement	Yes
Basement	Finished, Full

Exterior

Exterior Features	Garden
Lot Description	Backs on to Park/Green Space, Corner Lot, Lawn, No Neighbours Behind, Garden, Many Trees
Roof	Asphalt Shingle
Construction	Wood Frame
Foundation	Poured Concrete

Additional Information

Date Listed April 5th, 2025

Days on Market 2

Zoning LR

Listing Details

Listing Office Royal LePage Network Realty Corp.

Data is supplied by Pillar 9â,,ç MLSÂ® System. Pillar 9â,,ç is the owner of the copyright in its MLSÂ® System. Data is deemed reliable but is not guaranteed accurate by Pillar 9â,,ç. The trademarks MLSÂ®, Multiple Listing ServiceÂ® and the associated logos are owned by The Canadian Real Estate Association (CREA) and identify the quality of services provided by real estate professionals who are members of CREA. Used under license.