

\$1,600,000 - 78 Barnaby View, Rural Pincher Creek No. 9, M.D. of

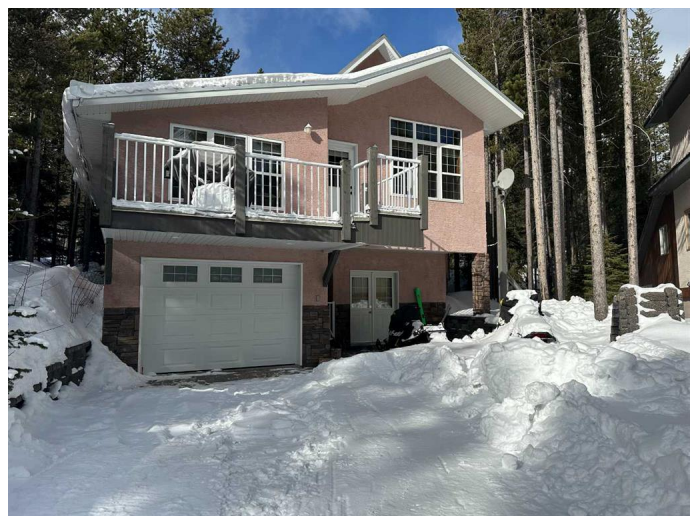
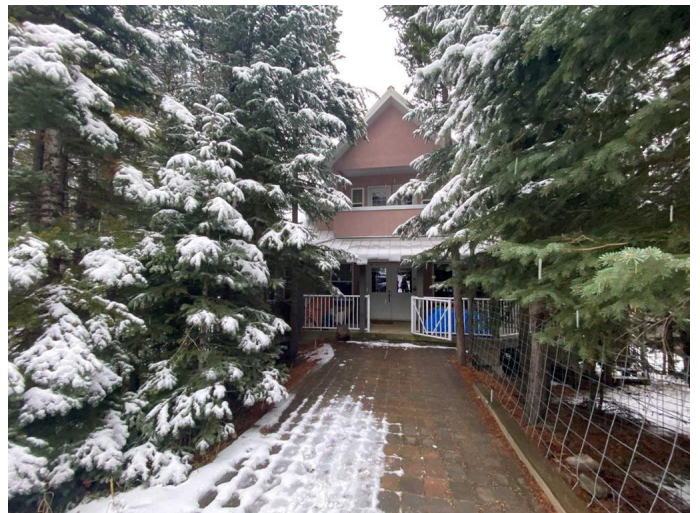
MLS® #A2179732

\$1,600,000

5 Bedroom, 4.00 Bathroom, 2,260 sqft
Residential on 0.12 Acres

Castle Mountain Resort, Rural Pincher Creek
No. 9, M.D. of, Alberta

You will be amazed when you enter this impressive SKI IN/SKI OUT Castle Mountain home with year-round road access! Custom built by a master carpenter in 2005, this property has been skillfully constructed from high-end unique materials. Reclaimed "figured" Douglas fir from a demolished SOUTHERN ALBERTA GRAIN ELEVATOR has been incorporated into the kitchen cabinetry, bar, shelving, and entry. Main floor fir beams were salvaged from Fort Macleod's historic WWII B-52 BOMBER HANGAR! All windows, doors, baseboards and trim throughout have been skillfully crafted from clear fir. Unlike many Castle properties, this has year-round road access from both Castle Mtn. Loop and from Barnaby View cul-de-sac. The west entry facing the "hill" has generous space to house your ski equipment and to don your winter garb. After a fine day of outdoor adventure, unwind by the cozy wood-burning Napoleon fireplace in the adjacent family room. Designed with entertaining in mind, the beautiful gourmet kitchen will appeal to "your inner chef" while being open to the eating bar & bar, huge dining area, and balcony with bbq. Step down to the welcoming sunken living room with mountain views to the east and the west, a Napoleon freestanding gas fireplace, and an office alcove. Retire upstairs to the stunning master bedroom with full ensuite and



private balcony. There are 2 additional roomy bedrooms and a full bathroom on the upper floor.

Moving to the lower level walk-out, you will find a 900+ sq. ft. self-contained suite featuring a living room, kitchen, 2 bedrooms, 4 pce. bathroom and a patio with an outdoor fireplace. Suite has both interior and exterior access. The exterior walkways and hot tub are sheltered eliminating the need to shovel snow !! The 400 sq. ft. attached garage (accessed from Barnaby View cul-de-sac) has room to house your vehicle while giving abundant extra storage space. Quality construction includes closed-cell blue foam insulation (R-50 walls/R-70 ceilings), combined in-floor and baseboard/hot water heating, non-combustible stucco exterior, metal roof, and front & rear interlocking paved stone off-street parking pads. Fire hydrant is located at the corner of the driveway (excellent insurance benefit). The ambiance of this "one-of-a-kind" home cannot be truly appreciated without actually experiencing it! Call your favorite real estate agent to view!

Built in 2005

Essential Information

MLS® #	A2179732
Price	\$1,600,000
Bedrooms	5
Bathrooms	4.00
Full Baths	4
Square Footage	2,260
Acres	0.12
Year Built	2005
Type	Residential
Sub-Type	Detached
Style	1 and Half Storey
Status	Active

Community Information

Address	78 Barnaby View
Subdivision	Castle Mountain Resort
City	Rural Pincher Creek No. 9, M.D. of
County	Pincher Creek No. 9, M.D. of
Province	Alberta
Postal Code	T0K 1W0

Amenities

Utilities	Electricity Connected, Natural Gas Connected, High Speed Internet Available, Phone Connected, Sewer Connected, Water Connected
Parking Spaces	3
Parking	Interlocking Driveway, Multiple Driveways, Parking Pad, See Remarks, Single Garage Attached
# of Garages	1

Interior

Interior Features	Bar, Beamed Ceilings, Built-in Features, Natural Woodwork, Recessed Lighting
Appliances	Built-In Oven, Dishwasher, Dryer, Gas Cooktop, Refrigerator, Washer, Window Coverings
Heating	Boiler, Combination, In Floor, Fireplace(s), Natural Gas, Wood
Cooling	None
Fireplace	Yes
# of Fireplaces	3
Fireplaces	Family Room, Gas, Living Room, Outside, See Remarks, Wood Burning
Has Basement	Yes
Basement	Finished, Partial, Suite, Walk-Out

Exterior

Exterior Features	Balcony, Barbecue, Dog Run, Private Yard
Lot Description	Cul-De-Sac, Dog Run Fenced In, Many Trees, Pie Shaped Lot
Roof	Metal
Construction	Concrete, Mixed, See Remarks, Stucco
Foundation	Poured Concrete

Additional Information

Date Listed	November 21st, 2024
Days on Market	215
Zoning	CMR R1

Listing Details

Listing Office SUTTON GROUP-LETHBRIDGE CROWSNEST PASS BRANCH

Data is supplied by Pillar 9â,,ç MLSÂ® System. Pillar 9â,,ç is the owner of the copyright in its MLSÂ® System. Data is deemed reliable but is not guaranteed accurate by Pillar 9â,,ç. The trademarks MLSÂ®, Multiple Listing ServiceÂ® and the associated logos are owned by The Canadian Real Estate Association (CREA) and identify the quality of services provided by real estate professionals who are members of CREA. Used under license.